

-- FURNITURE FLOOR PLAN SHEETS FOR REFERENCE ONLY --

KEYNOTES

REFERENCE NOTES

- 11.04 FLOOR SCRUBBER, OFOL
- 12.02 FURNITURE PARTITION, OFOL



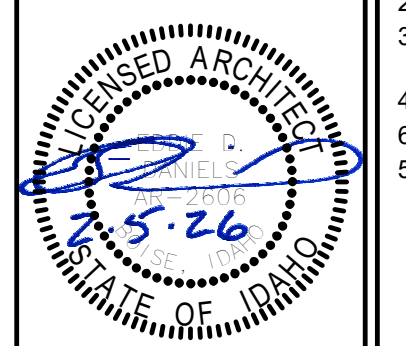
Project:
CWI BUILDING

WHITWATER BLVD & MAIN ST.
BOISE, IDAHO

Sheet:
LEVEL 01 - TI FURNITURE
FLOOR PLAN

PERMIT/BID SET

Revisions:		
1	ADDENDUM 001	7/11/2025
2	ASI-05	11/07/2025
3	CITY RESUBMITTAL	12/19/2025
4	ASI-10	4/1/2026
6	PLAN MOD	6/15/2026
5	ASI-12	5/28/2026



Project No: 23006-12
 Drawn By: KPNB
 Checked By: PR
 Date: 6/25/2025

Sheet No:
A8.31t

1

2

3

4

5

6

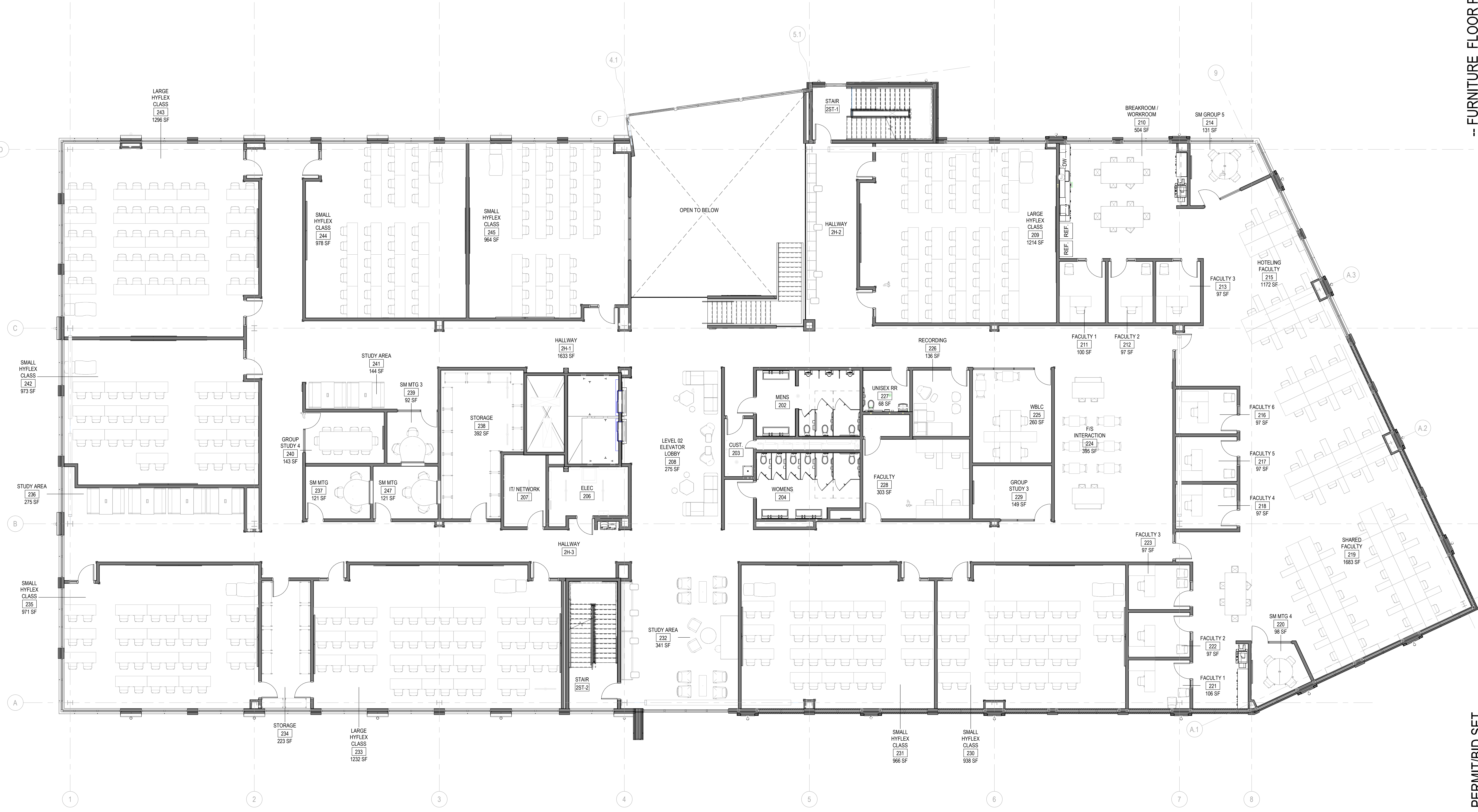
A

B

C

D

E



-- FURNITURE FLOOR PLAN SHEETS FOR REFERENCE ONLY --

HUMMEL ARCHITECTS
 205 N. 10th Street, Suite 300, Boise, Idaho 83702, 208.543.7923
 482 Constitution Way, Suite 111, Idaho Falls, ID 83402, 208.543.7923
 hummelarch.com

Project: CWI BUILDING
 WHITEWATER BLVD & MAIN ST. BOISE, IDAHO

Sheet: LEVEL 02 - TI FURNITURE FLOOR PLAN

PERMIT/BID SET

Revisions:
 1 ADDENDUM 001 7/11/2025
 2 CITY RESUBMITTAL 3 12/19/2025
 3 PLAN MOD 6/15/2026

Project No: 23006-12
 Drawn By: KPMB
 Checked By: PR
 Date: 6/25/2025

Sheet No: **A8.32t**

E1 LEVEL 02 - TI FURNITURE PLAN
A8.32t 1/8" = 1'-0"

5/22/2026 12:00:02 PM

A

B

C

D

E

1

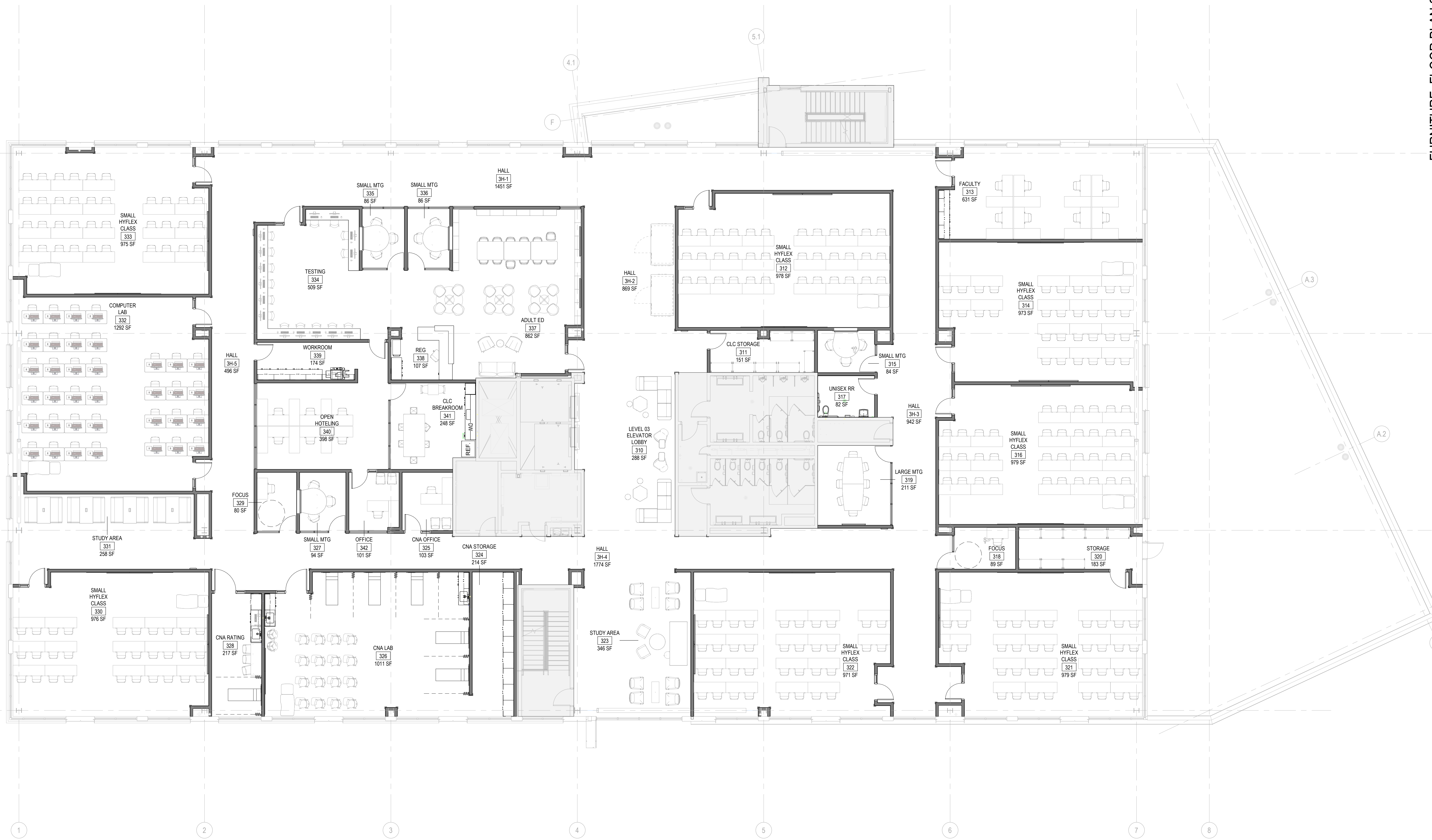
2

3

4

5

6



-- FURNITURE FLOOR PLAN SHEETS FOR REFERENCE ONLY --

HUMMEL
ARCHITECTS

205 N. 10th Street, Suite 300, Boise, Idaho 83702, 208.545.7923
482 Constitution Way, Suite 101, Idaho Falls, ID 83402, 208.545.7923
hummeIarch.com

Project:
CWI BUILDING THIRD FLOOR TI

WHITEWATER BLVD & MAIN ST.
BOISE, IDAHO

Sheet:
LEVEL 03 - TI FURNITURE FLOOR PLAN

PERMIT/BID SET

Revisions: Δ

APPROVED ARCHITECT
5.26.2025

Project No: 23006-12
Drawn By: NB
Checked By: SA
Date: 6/25/2025

Sheet No:
3T1-A8.33t

D1 LEVEL 03 - TI FURNITURE PLAN
3T1-A8.33t 1/8" = 1'-0"

